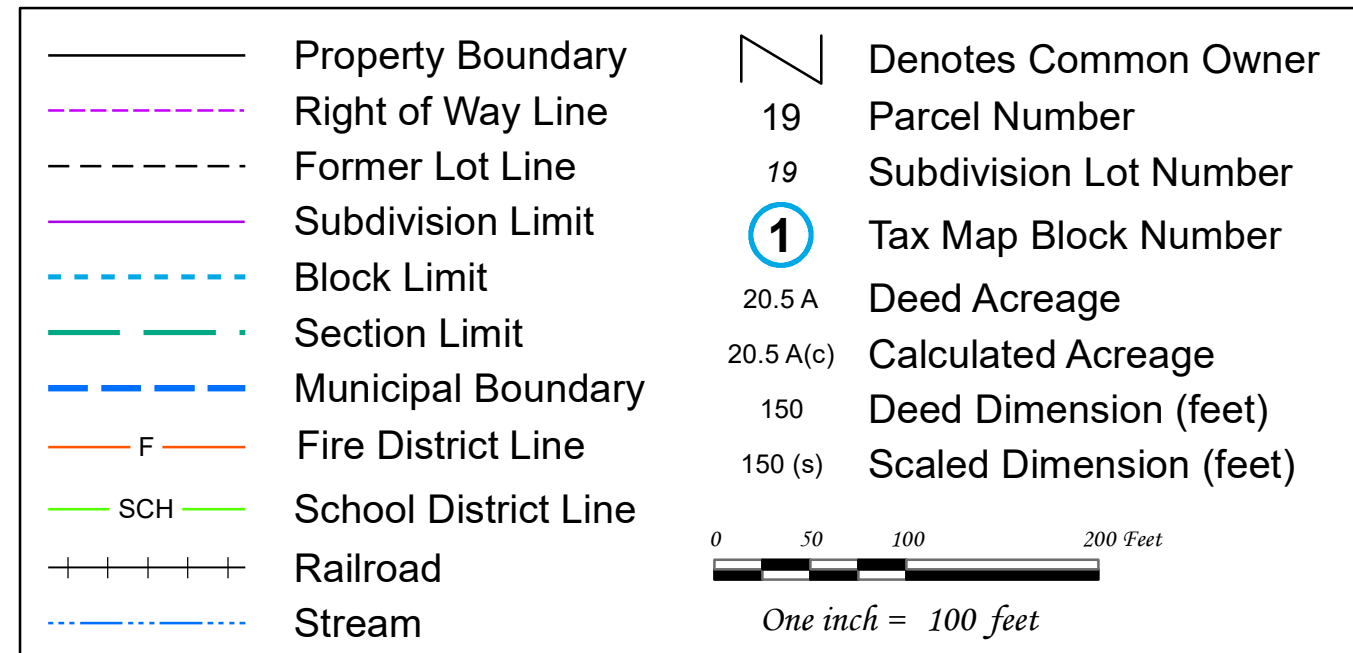


Assessor's Tax Map

Section 141.14

Village of Endicott
Broome County, New York
 Horizontal Datum is NY Central State Plane Feet, NAD 83
 Map produced: 8/3/2023



Revisions		Chg
Date		
2023-04-05	141.14-9-4.2 0 W 4	
2016-02-04	141.14-5-4.3 C1	
2005-10-26	140.14-1-62 00 140-3-1-20	
2003-03-27	141.14-1-6-5 16-2 141.14-16-8-17 and	
2003-03-27	141.14-8-18 imp 141.14-8-16	
2003-03-27	141.14-3-4 C1 141.14-3-5	
2000-10-25	141.14-1-1-3 C1 141.14-1-14	
2000-06-23	COMB. ALL OF 141.14-5-37 INTO	
2000-06-23	141.14-5-38	
2000-02-08	COMB.ED ALL OF 141.14-14-12 INTO	
2000-02-08	141.14-14-13	
1999-03-24	141.14-4-0 2 OUT OF 141.14-4-40	
1999-03-24	COMB. A PORTION OF 141.14-7-26 WITH	
1999-03-24	141.14-7-27	
1999-10-16	COMB. A PORTION OF 141.14-10-1 WITH	

[illegible][illegible]